

Data sheet for

MATRE

POP-UP NOZZLE DY16 MKII



Matre Maskin AS

5420 Rubbestadneset, Norway

Tel. +47 53 42 77 44

E-mail: company@matre.no

Web: www.matre.no

1 General product information

Matre's DY16 pop-up nozzles is designed to ensure uniform & reliable firewater distribution on helicopter deck in an emergency situation. Each nozzle will be spraying water in a semi-sphere covering up to seven (7) meters in diameters and height per nozzle.

When firewater is activated, no personnel are needed to operate the system.

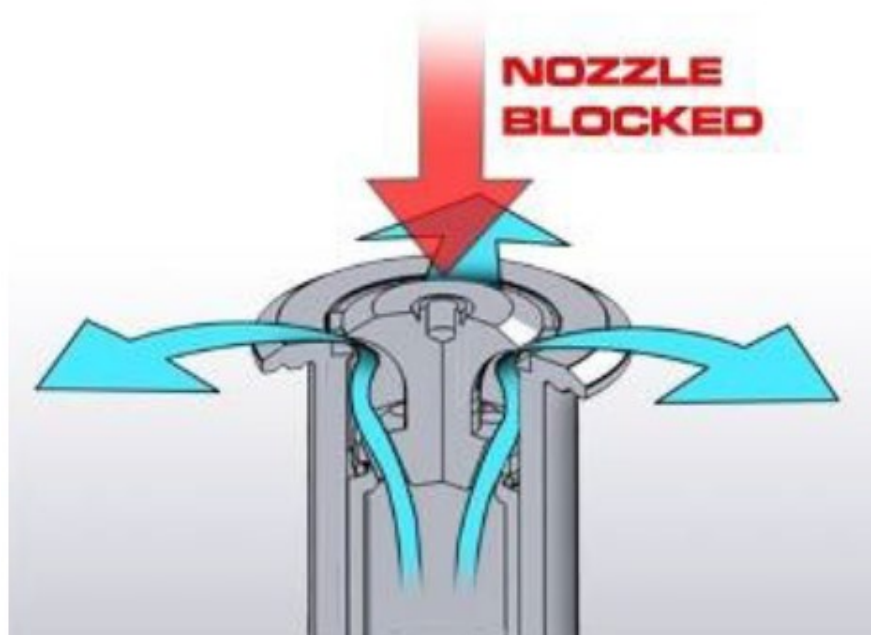


Figure 1; Blocked nozzle

Matre Pop-up nozzles to be flush mounted into the aluminum helideck surface.

In case of blocked nozzle the flow from the nozzle will remain the same as a popped-up one. As a result, our system will supply full water capacity on deck, even if one or more nozzles are blocked.

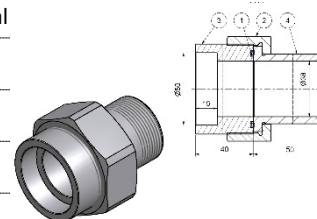
The Pop-up nozzle consist of two main parts. The pop-up nozzle cartridge and pop-up nozzle bulkhead.



Figure 2; Activated nozzle

2 Dimensions and interfaces

Characteristics	Standard	Options
Material	AISI 316	BS 1400 AB2 Titanium Gr2
Interface for water supply	1 ½" BSPP Female	Union for welding to any applicable material
Design pressure	20 bar	
Water pressure range	4-6 bar	
Flow tolerance	Nominal value $\pm 5\%$	
Spread diameter	7 m	
Throw height	6 -7 m (dependent of k-factor)	
Deck thickness	120 mm – 200 mm	Can be fitted to any deck thickness
Weight	0,6 kg	+ approx. 2 kg for bulkhead + approx. 1,2 kg for union



3 Obtainable K-factors

37,5	39,5	42	44	46	49	51	53,5	56	58,5	61	64	66,5
69,5	72,5	75	78	81	84,5	87,5	90,5	94	97,5	101		

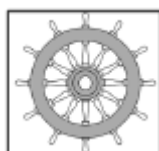
4 Conformity and approvals

The nozzles are approved and accepted for use under all international and national rules, all Class societies and all known rules and standards for on- and offshore helidecks.

Some of the superior rules ICAO, SOLAS, CAP 437, CAP 1264, NORSOK, NMD, NORMAM27, US-Coastguard etc.

The nozzles keep the following certifications:

DNV-GL type approval TAF00000EE
Maritime Equipment Directive MEDB00003WA



5 General dimensions

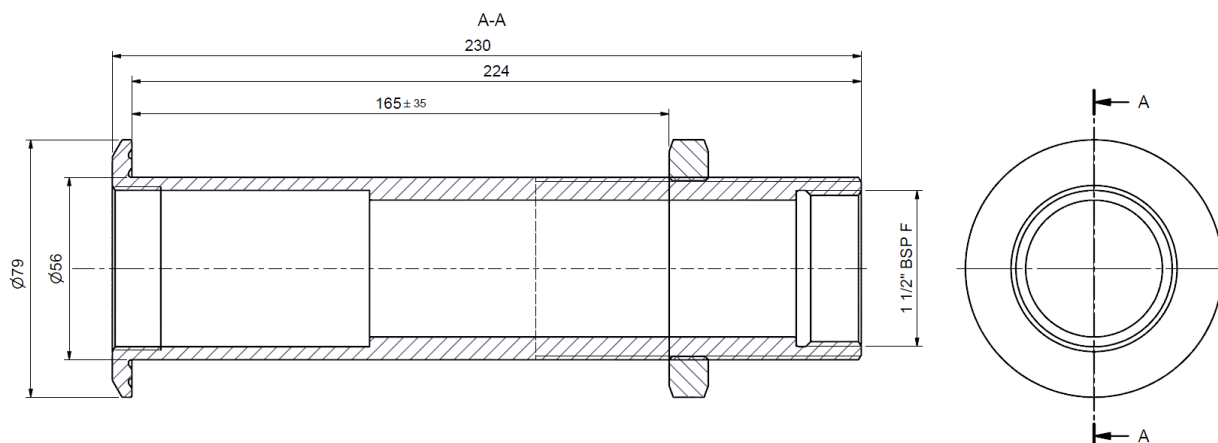


Fig 3; Standard bulkhead pipe

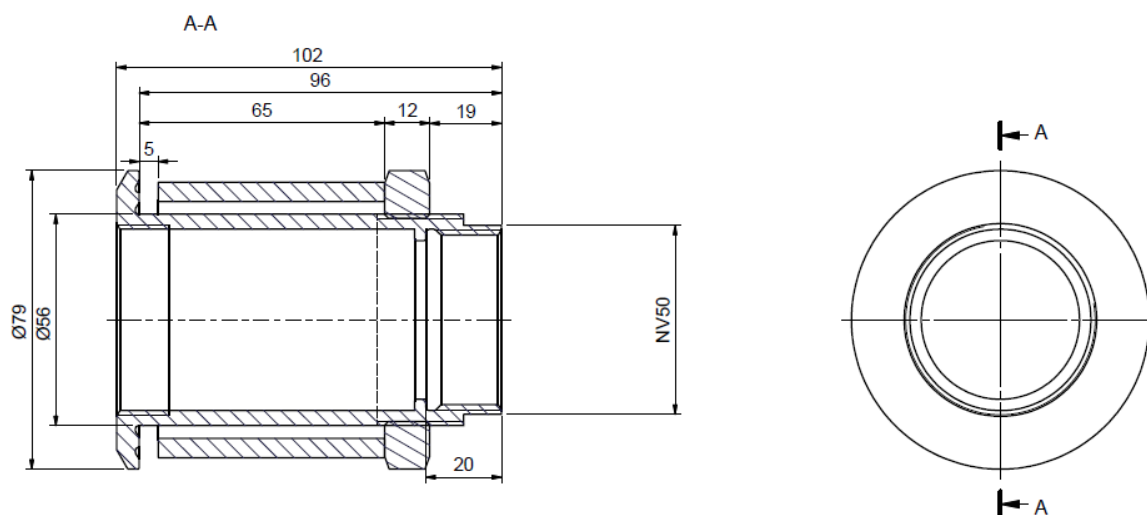


Fig 4; Bulkhead pipe for ships deck

Special bulkhead pipes can be offered on request.